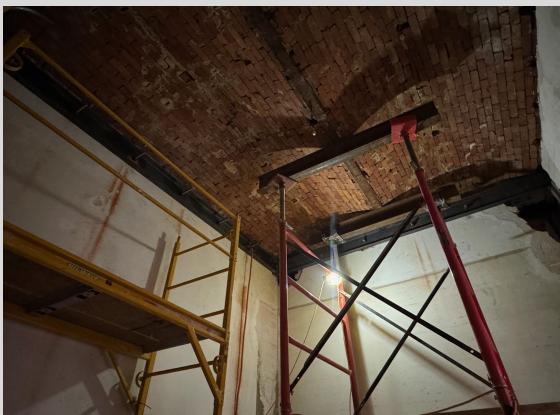


Perry County Courthouse Weekly Summary

Updated 9/27/24



Pinch Beam Install 9/27/24



2nd Floor Demo 9/27/24



2nd Floor Courtroom Painting 9/27/24

Construction Activities

- Electricians Continued Roughing-In Walls On The Ground, 1st, And 2nd Floor.
- HVAC Crew Continued Refrigerant Piping Install.
- CK Carpenters Continued Wood Restoration.
- CK Steel Crew Began Pinch Beam In 1st Floor Magistrate Court .
- Plaster Crew Continued Plaster Restoration On The 1st Floor.
- Painters Continued 1st Coat Throughout The 2nd Floor.
- Exterior Masons Installed Clock Face Frames And Finished Tuckpointing On The Clock Tower.
- Interior Masons Installed Bearing Plates For Pinch Beam In 1st Floor Magistrate Court.
- Demo Crew Removed Brick Arches, And Wall On The 2nd Floor.
- Plumbers Continued Ground And 1st Floor Plumbing Rough-In.

Total Manhours Worked To Date

- 33,723.5 Hours

Request For Information (RFI's)

- 4 Open RFI's

Submittals

- 2 Open Submittals

Weekly Weather Report

- Working Days Lost This Week: 0

Cost Risk Exposure

- CK Continuing To Issue Subcontracts.